

Official Zoning Map

Town of Winhall, Vt.

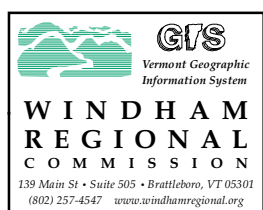
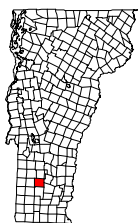
adopted March 6, 2018

- F** Forest
- RRA** Rural Residential and Agricultural
- Rec** Recreational
- TL** Transient Lodging
- C** Commercial
- R** Residential
- V** Village

- SP(c)** Special Purpose District: Conservation protection
- SP(sh)** Special Purpose District: Shoreland (500' from water)
- SP(sc)** Special Purpose District: Scenic restriction overlay

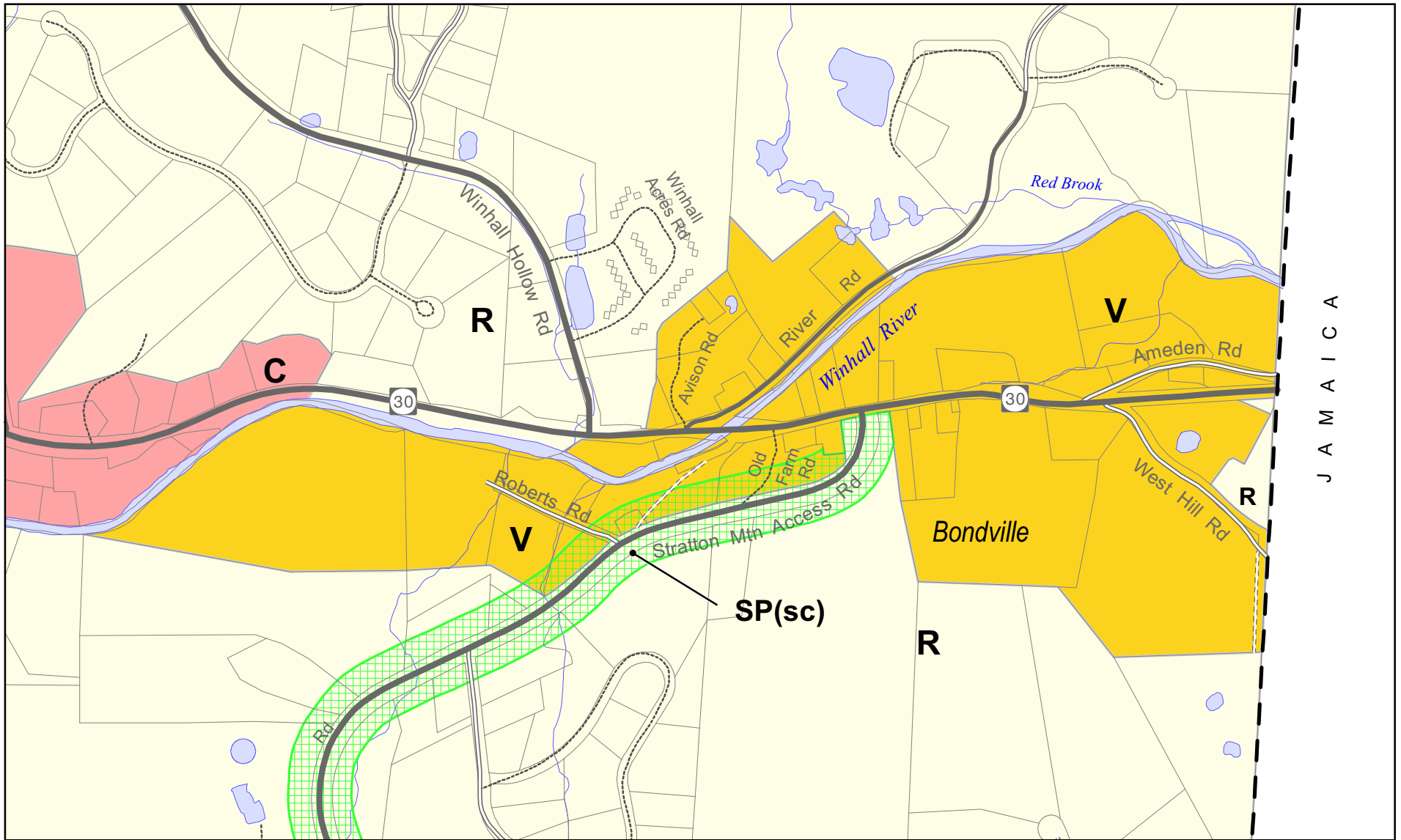
- TDR** Transfer of Development Rights sending area
- Transfer of Development Rights receiving area

- Zoning district boundaries are designated by the Town of Winhall. GIS data representing these boundaries were developed by Windham Regional Commission. Various 1:5000 scale GIS base data layers were used, including parcel boundaries, road centerlines, surface waters, and the Long Trail centerline.



0.5 0 0.5 1 1.5 Miles

1:48,000



J A M A I C A

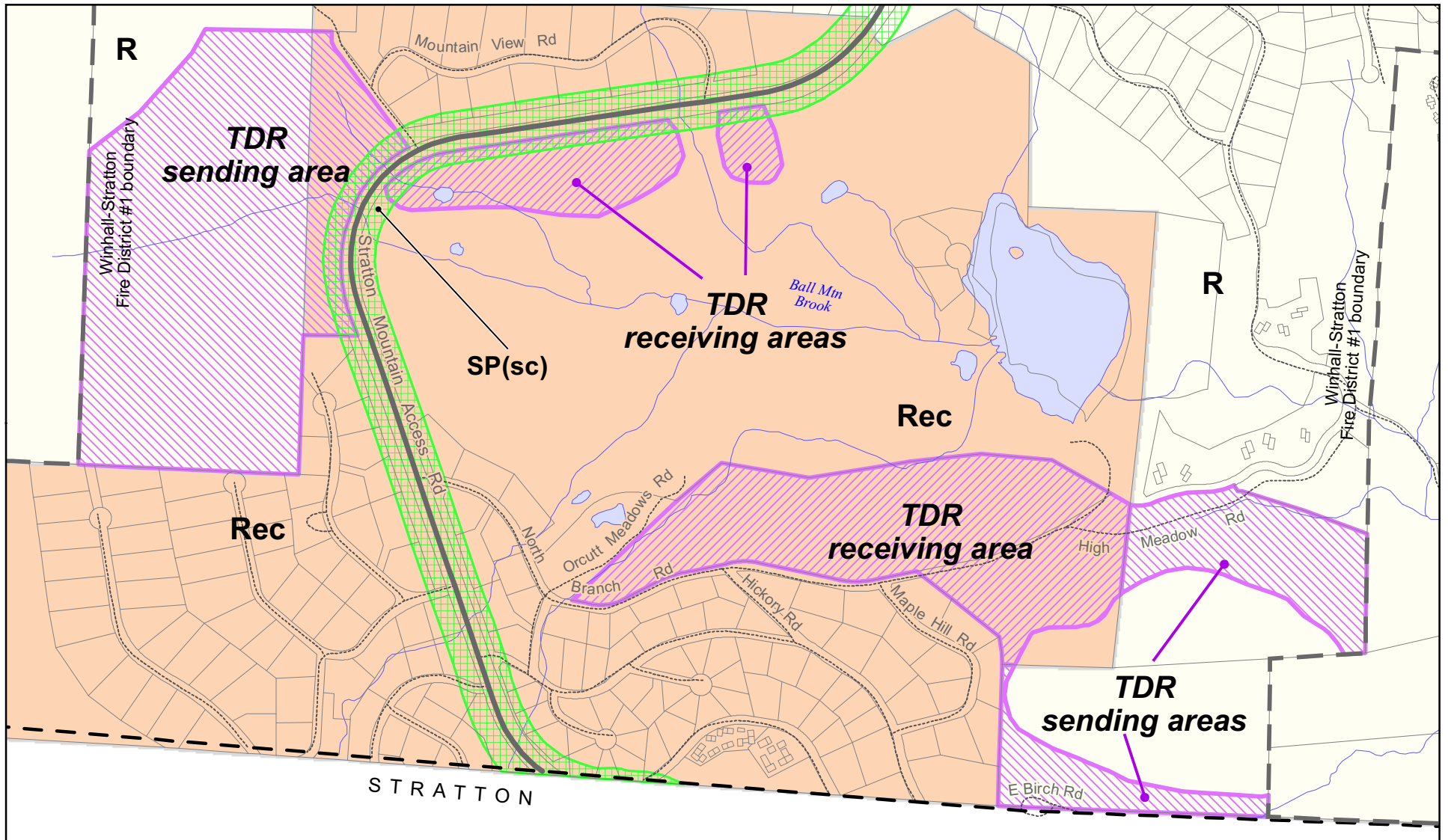
Village Inset, Map #1

Town of Winhall, Vt.

adopted March 6, 2018

- RRA** Rural Residential and Agricultural
- C** Commercial
- R** Residential
- V** Village
- SP(sc)** Special Purpose District: Scenic restriction overlay



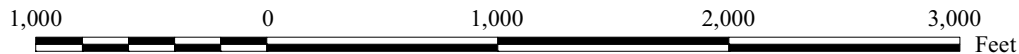


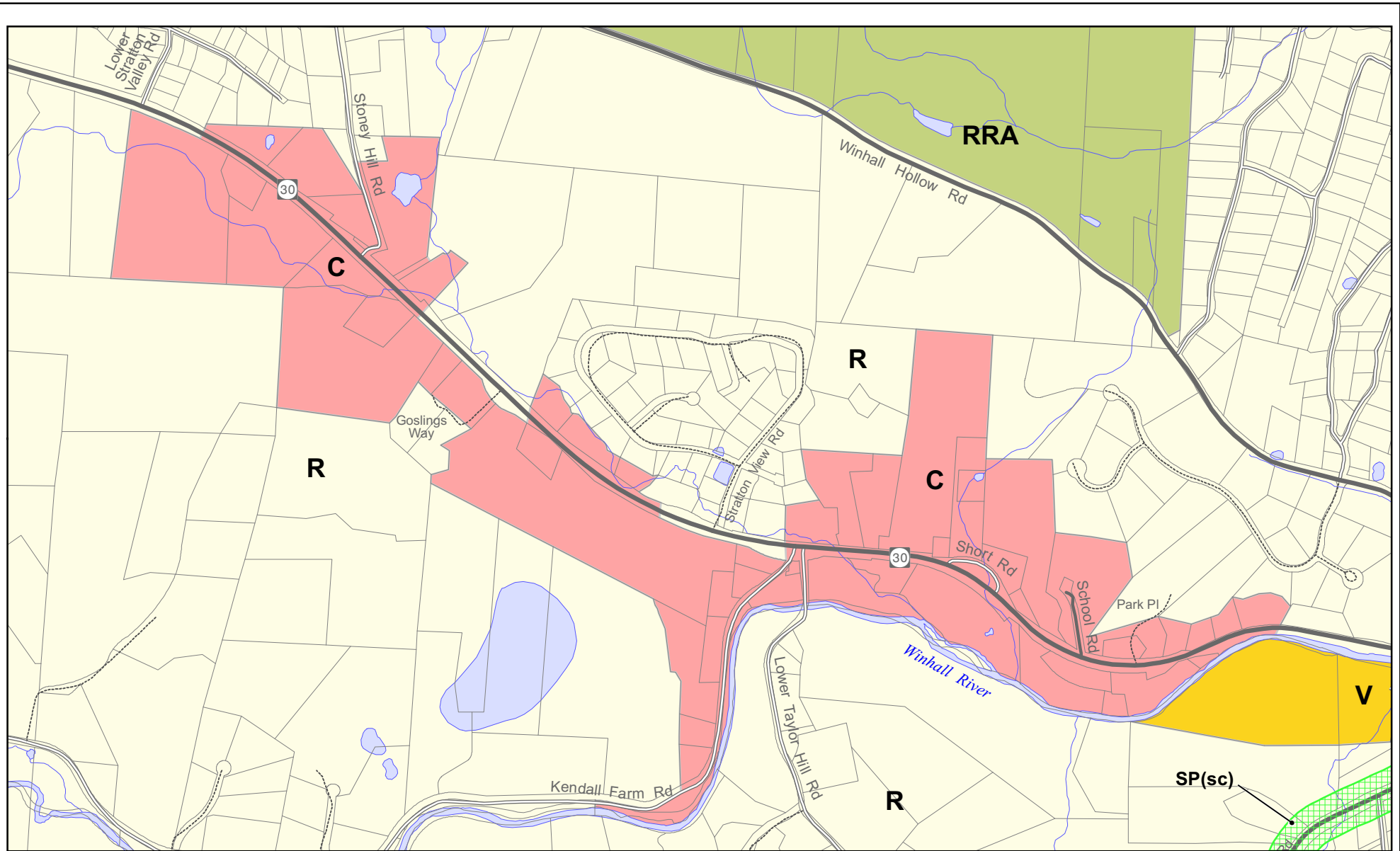
Transfer of Development Rights Inset, Map #2

Town of Winhall, Vt.

adopted March 6, 2018

- Rec** Recreational
- R** Residential
- SP(sc)** Special Purpose District:
Scenic restriction overlay
- TDR** Transfer of Development
Rights sending area
- Transfer of Development
Rights receiving area





Commercial Inset, Map #3

Town of Winhall, Vt.

adopted March 6, 2018

- RRA** Rural Residential and Agricultural
- C** Commercial
- R** Residential
- V** Village
- SP(sc)** Special Purpose District: Scenic restriction overlay

