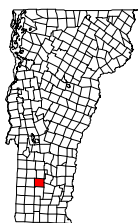


Existing Land Use

Town of Winhall, Vt.

August 2016



0.5 0 0.5 1 1.5 Miles

1:48,000

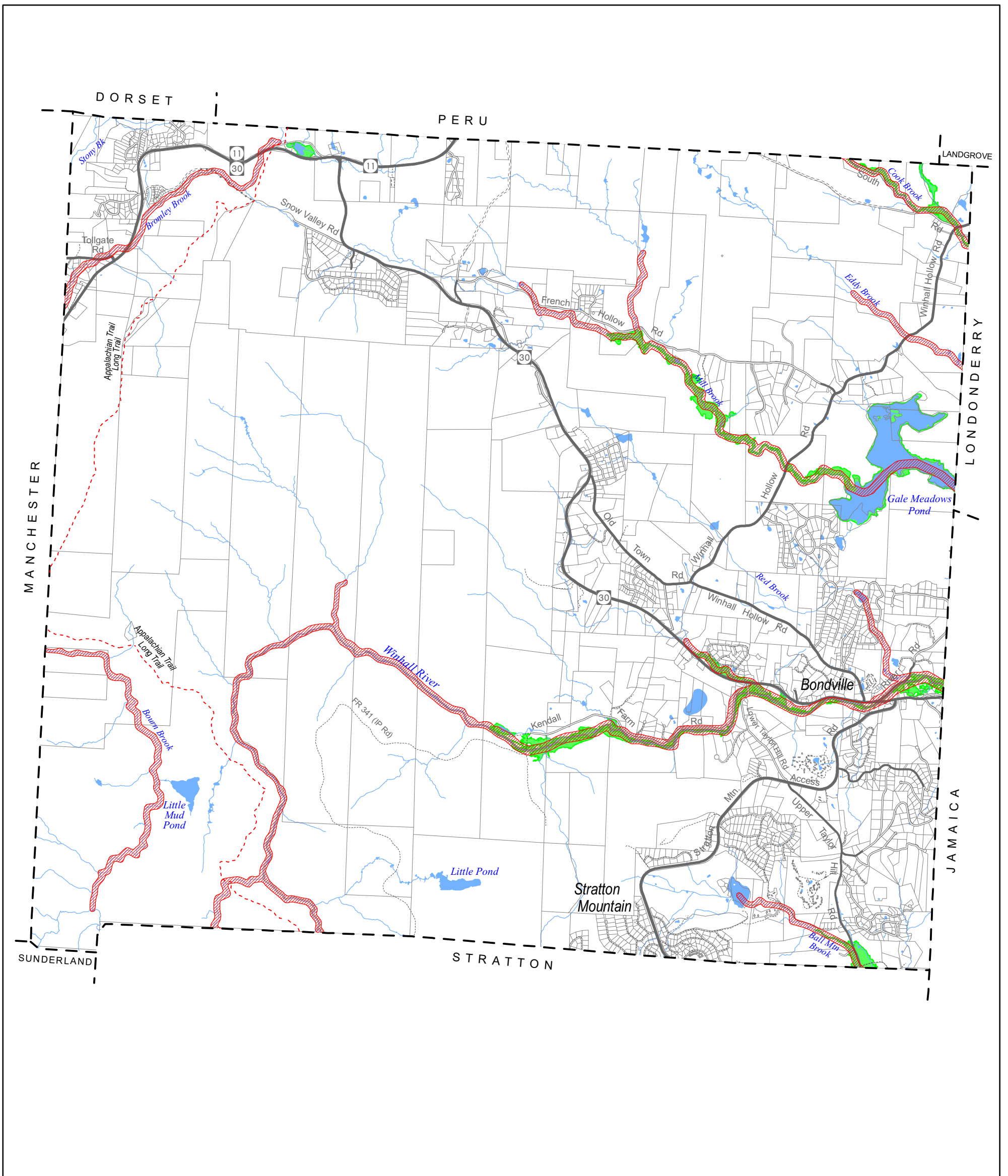
- ■ Residential building: single family; multi-family
- Commercial or industrial building
- Public/Institutional building
- Parcel line (2012)
- ▨ Conservation easement
- US Forest Service land (Green Mountain National Forest)
- State land
- Town land
- Stream
- River or pond

Sources:

- Building locations are extracted from the VGIS data layer ESITE, captured using Global Positioning System technology or from ortho-photos for the Vermont Enhanced 9-1-1 project. Data are current to 2016.

- Parcel lines are from GIS data developed by Cartographic Associates, Littleton, N.H. These data correspond to parcel information portrayed on Winhall's 1:5000-scale tax maps. Data are current to 2012.



- Public and conservation land boundaries were developed by Windham Regional Commission using a variety of sources, including UVM's conserved lands database, information from the U.S. Forest Service, and Winhall's GIS parcel data.

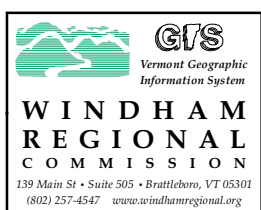
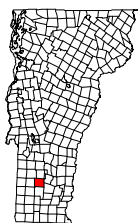


Flood and Fluvial Erosion Hazard Areas

Town of Winhall, Vt.

August 2016

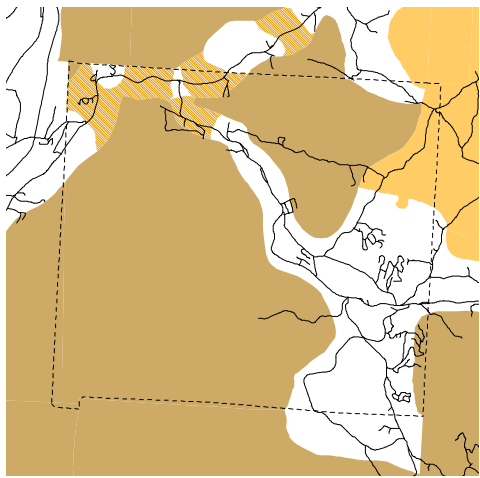
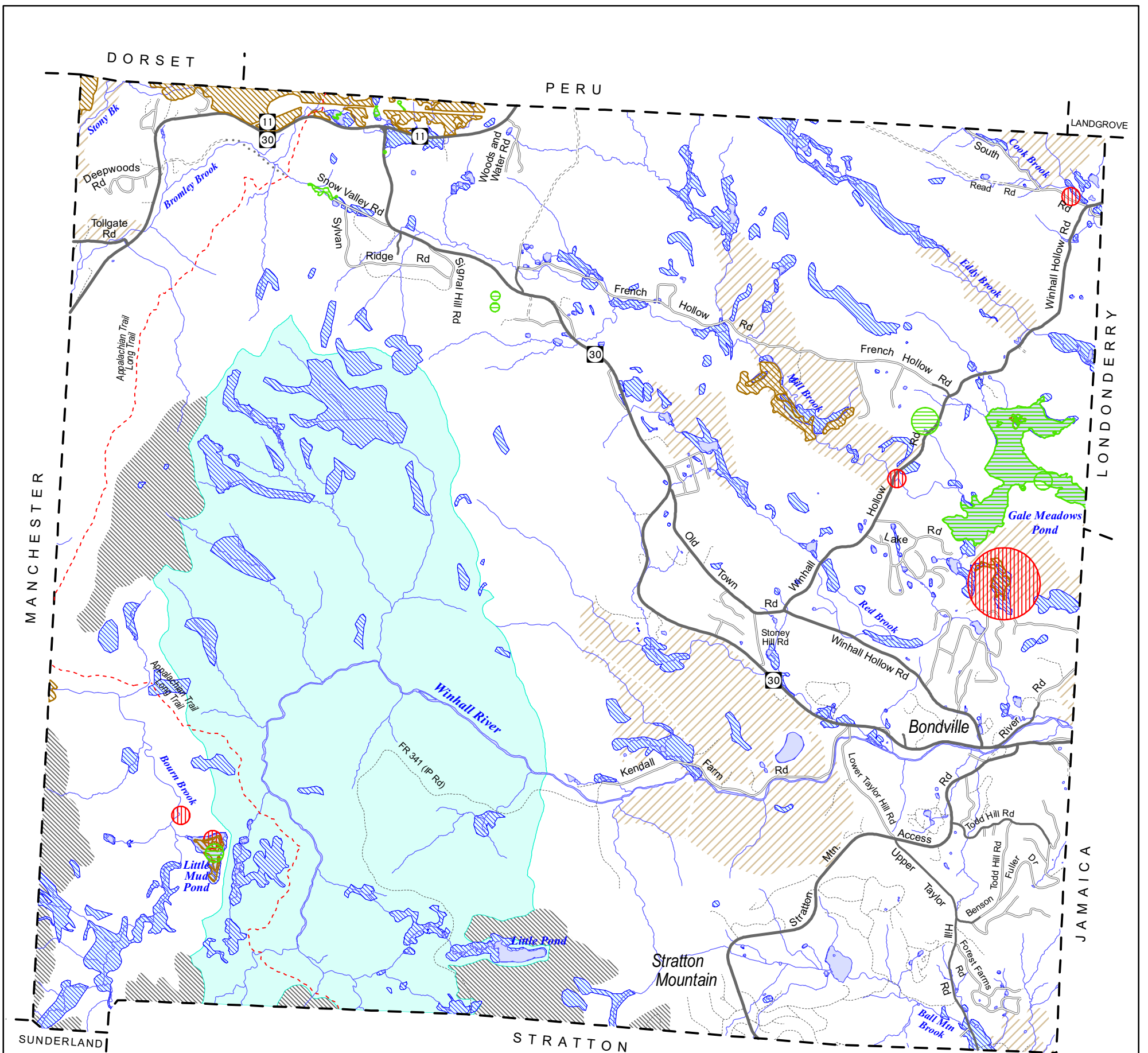
-  ANR-mapped River Corridor *
-  FEMA Special Flood Hazard Area



* River Corridor data provided by the Secretary of Natural Resources pursuant to 10 V.S.A. Sec. 1428(a). Official source of River Corridor data is tinyurl.com/floodreadyatlas. Where river corridors are not mapped, the corridor is taken to be the area within 50 feet of a perennial stream (only perennial streams are shown on this map).

0.5 0 0.5 1 1.5 Miles

1:48,000



Bear habitat map

- Bear production habitat
- Seasonal bear habitat
- Bear crossing area

- Bear habitat data are from GIS data provided the University of Vermont's Spatial Analysis Laboratory. This data layer was developed from Vermont Agency of Natural Resources, Department of Fish and Wildlife habitat maps to provide a general overview of bear habitat.

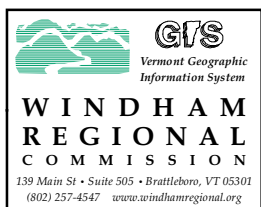
Natural Resources Town of Winhall, Vt.

August 2016

- Rare or uncommon animal
- State threatened, rare, or uncommon plant
- Significant natural community
- Wetland
- Class A watershed
- Land over 2500 feet elevation
- Deer wintering area
- River, lake, or pond
- Stream/river

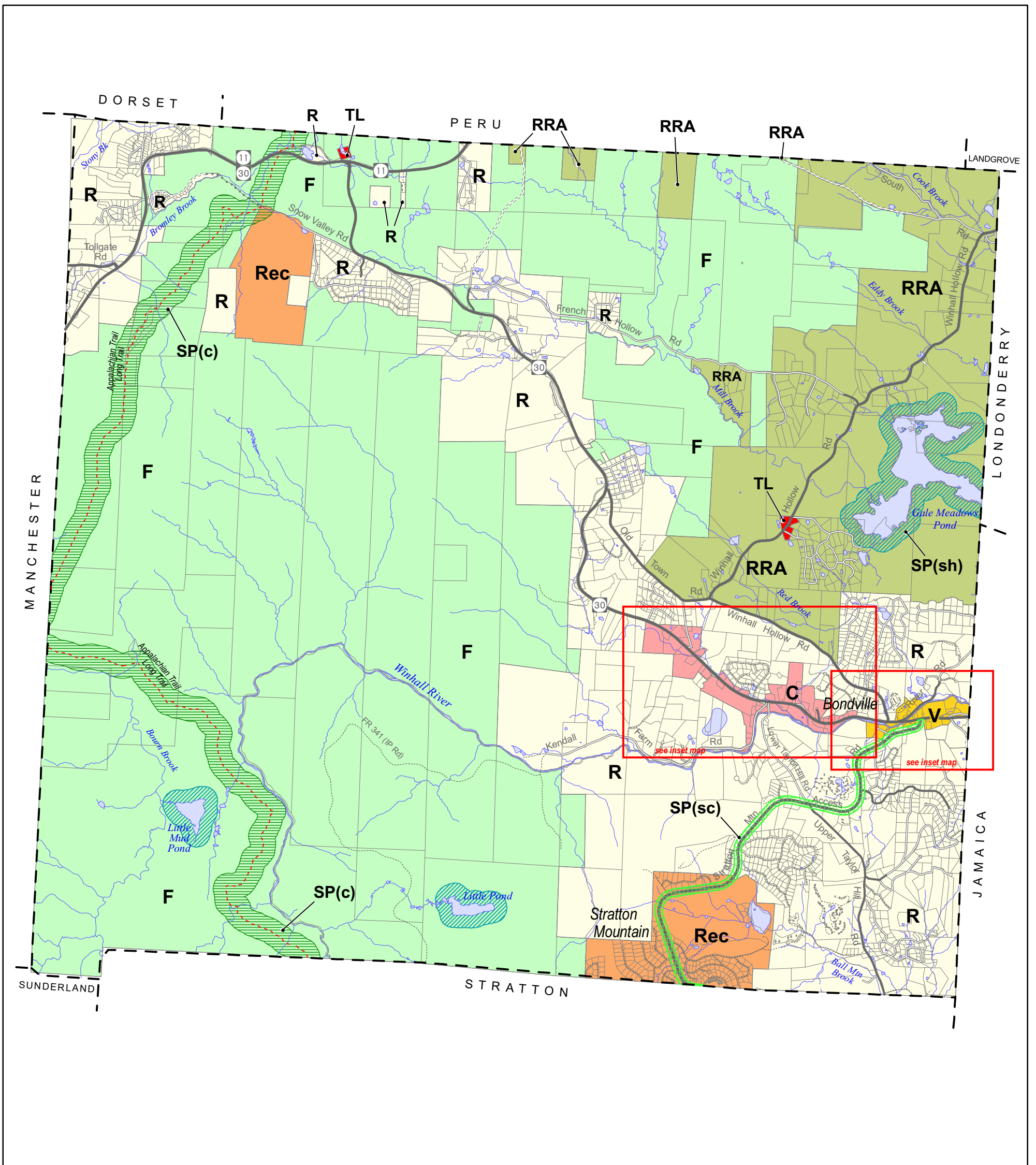
Data sources:

- Surface waters are from the Vermont Hydrography Dataset (VGIS data layer SWnnnnnnnn).
- Natural Heritage data are from VT Dept. of Fish and Wildlife, Nongame and Natural Heritage Program's Natural Heritage Inventory Database. This includes data on Rare, Threatened and Endangered Species and Significant Natural Communities database (VGIS layer RTENATCOM), and on uncommon species and other features (VGIS layer UNCOMSPOF).
- Wetlands data are from the Vermont Significant Wetlands Inventory (VGIS data layer VSWI) as of 2010. These include wetlands in the original VSWI data, as well as those from National Wetlands Inventory (NWI) maps, and show approximate locations of wetlands that are generally 3 acres or larger.
- Deer wintering areas are taken from the VGIS data layer DEERWN. They were delineated by VT ANR, Department of Fish and Wildlife, and have been updated to a limited extent through 2011.
- Lands over 2500 feet in elevation were digitized by VT ANR from 1:24000 USGS topographic maps.



0.5 0 0.5 1 1.5 Miles

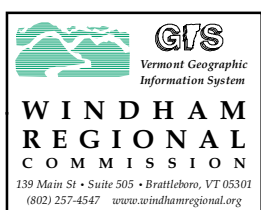
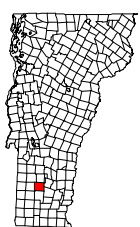
1:48,000



Proposed Land Use - Town Map

Town of Winhall, Vt.

August 2016



0.5 0 0.5 1 1.5 Miles

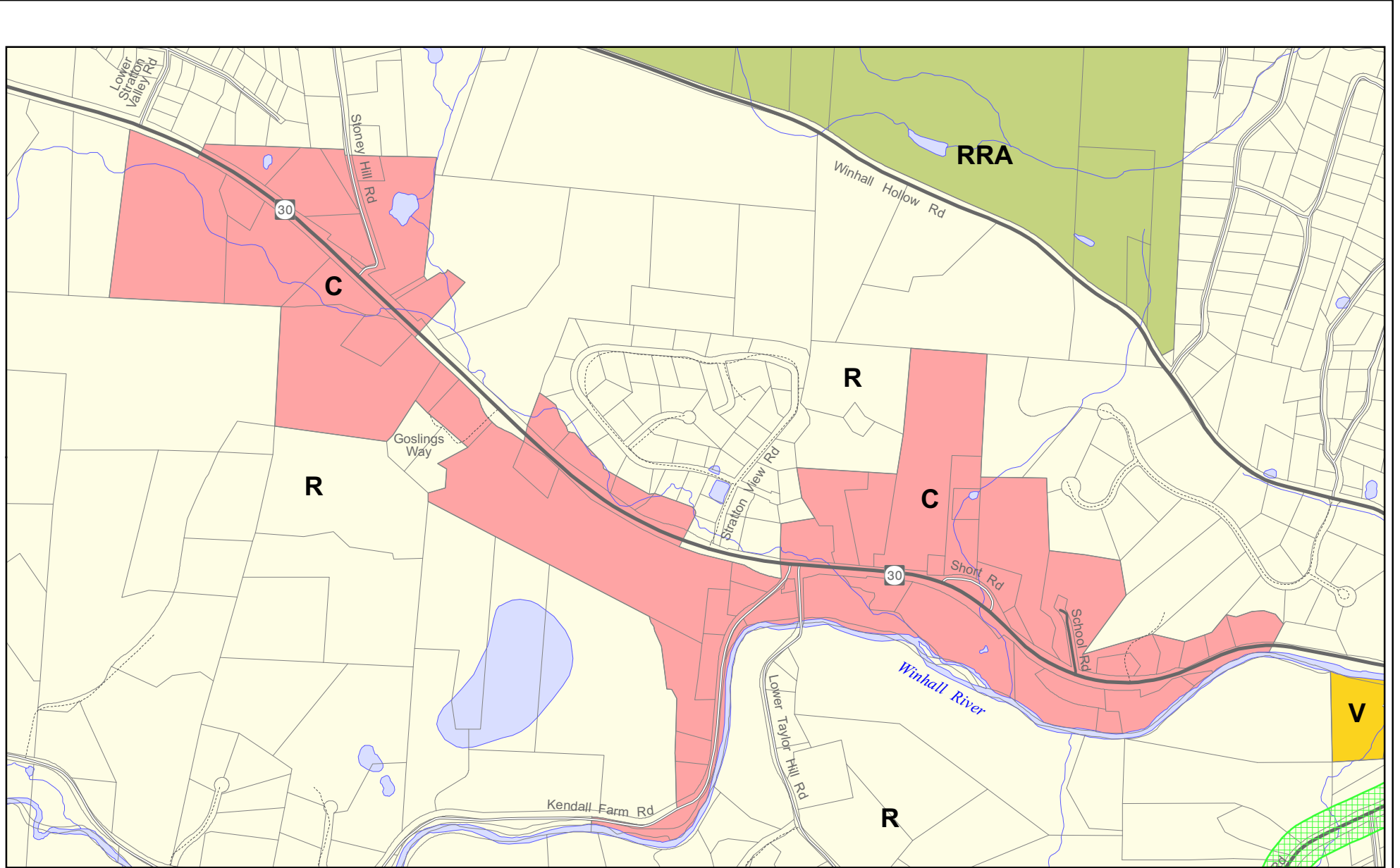
1:48,000

- F** Forest
- RRA** Rural Residential and Agricultural
- Rec** Recreational
- TL** Transient Lodging
- C** Commercial
- R** Residential
- V** Village
- SP(c)** Special Purpose District: Conservation protection
- SP(sh)** Special Purpose District: Shoreland (500' from water)
- SP(sc)** Special Purpose District: Scenic restriction overlay

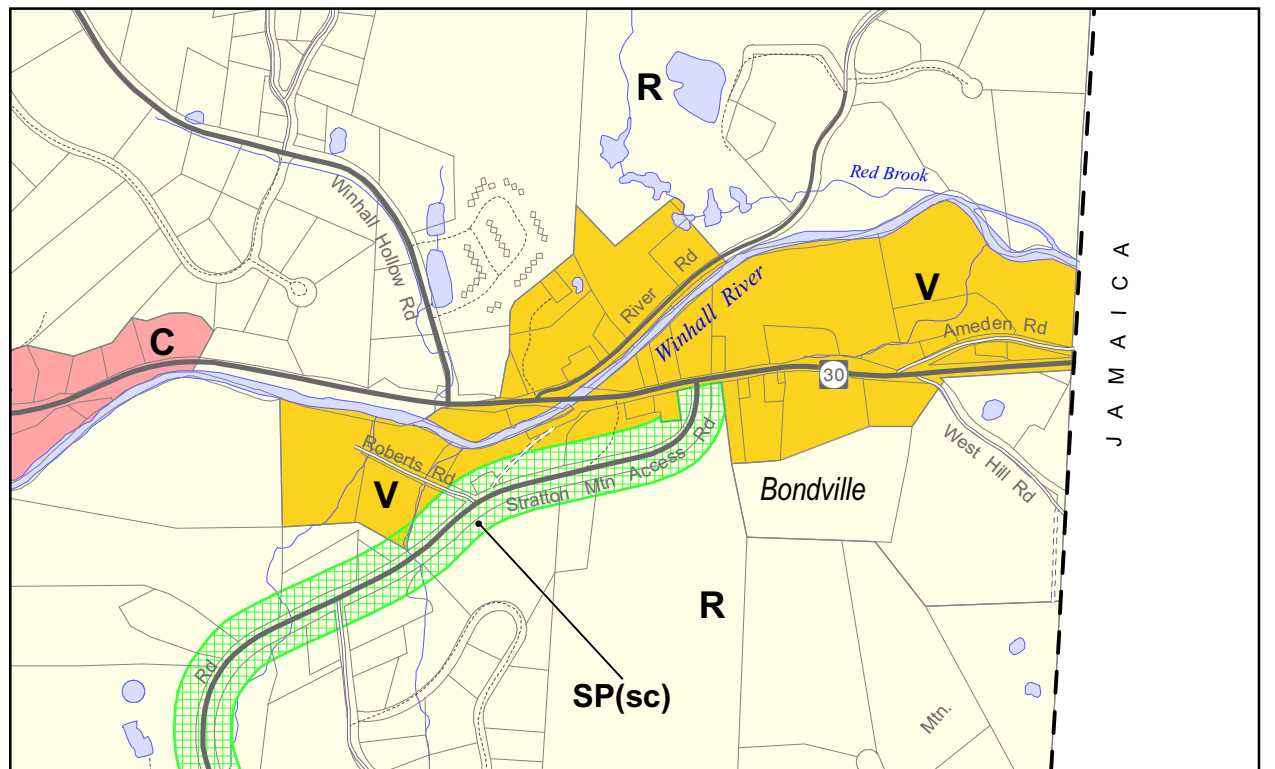
- Stream/river
- Pond

Sources:

- Proposed land use district boundaries are designated by the Town of Winhall. GIS data representing these boundaries were developed by Windham Regional Commission in 2003, updated 2006 and 2016. Various 1:5000 scale GIS base data layers were used, including parcel boundaries, road centerlines, surface waters, and the Long Trail centerline.



Commercial inset

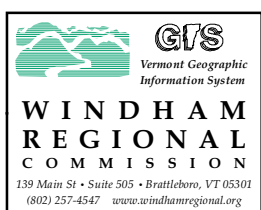


Village inset

Proposed Land Use - Inset Maps

Town of Winhall, Vt.

August 2016



0.5 0 0.5 1 1.5 Miles

1:48,000

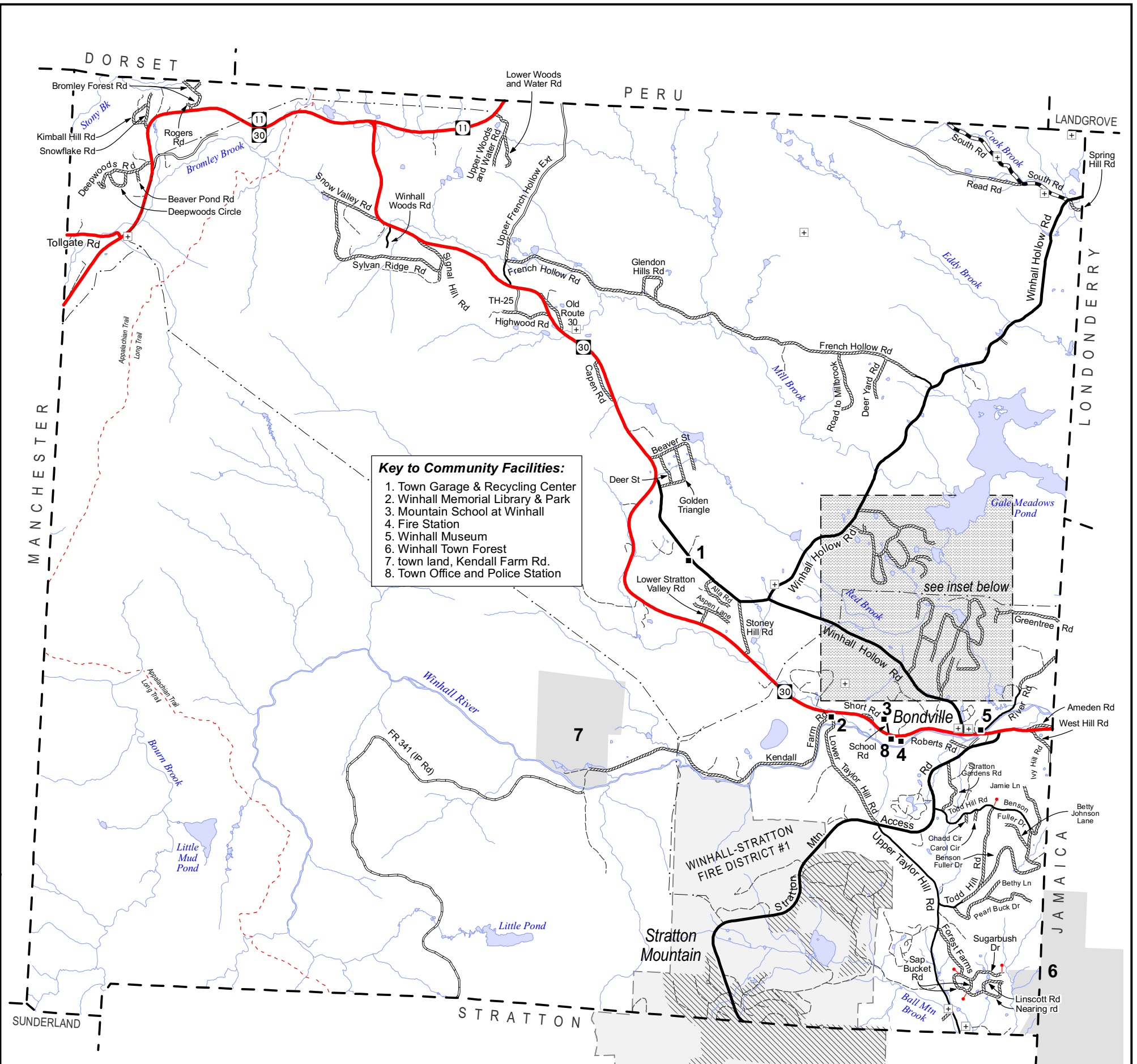
- F** Forest
- RRA** Rural Residential and Agricultural
- Rec** Recreational
- TL** Transient Lodging
- C** Commercial
- R** Residential
- V** Village

- SP(c)** Special Purpose District: Conservation protection
- SP(sh)** Special Purpose District: Shoreland (500' from water)
- SP(sc)** Special Purpose District: Scenic restriction overlay

- Stream/river
- Pond

Sources:

- Proposed land use district boundaries are designated by the Town of Winhall. GIS data representing these boundaries were developed by Windham Regional Commission in 2003, updated 2006 and 2016. Various 1:5000 scale GIS base data layers were used, including parcel boundaries, road centerlines, surface waters, and the Long Trail centerline.



- Key to Community Facilities:**
1. Town Garage & Recycling Center
 2. Winhall Memorial Library & Park
 3. Mountain School at Winhall
 4. Fire Station
 5. Winhall Museum
 6. Winhall Town Forest
 7. town land, Kendall Farm Rd.
 8. Town Office and Police Station

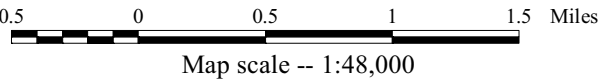
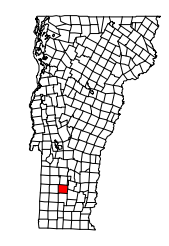
Sources:

- Highway data are from Vt. Agency of Transportation (VGIS data layer RDSnmmn), edited by WRC in 2016.
- Community facilities were identified by the Winhall Planning Commission and were located by Windham Regional Commission using VGIS E911 ESITE data, Vermont orthophotos, and Winhall's digital parcel data.
- Electric transmission lines are taken from VGIS ELTRN data layer. They were digitized from 1:5000 orthophotos.

Transportation and Community Facilities

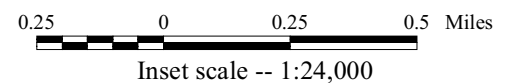
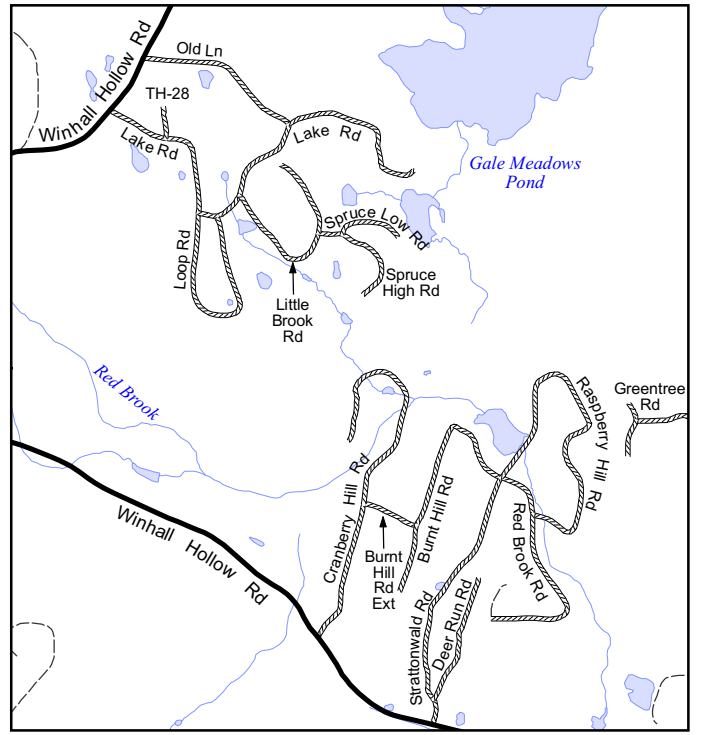
Town of Winhall, Vt.

August 2016



Map scale -- 1:48,000

- State Highway
- Class 2 town highway - paved
- Class 2 town highway - unpaved
- Class 3 town highway - paved
- Class 3 town highway - unpaved
- Class 4 town highway
- U.S. Forest Service Road
- Private road/drive
- Indicates change in road name
- Town boundary
- Stream
- River or pond
- Town land (large parcel)
- Fire district
- General area served by municipal sewer
- Community facility
- Cemetery
- CVPS 46-kv electric transmission line



Inset scale -- 1:24,000